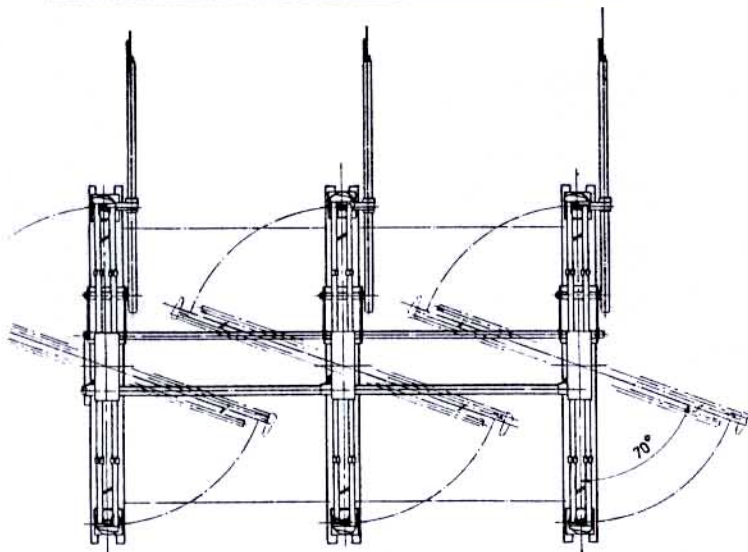
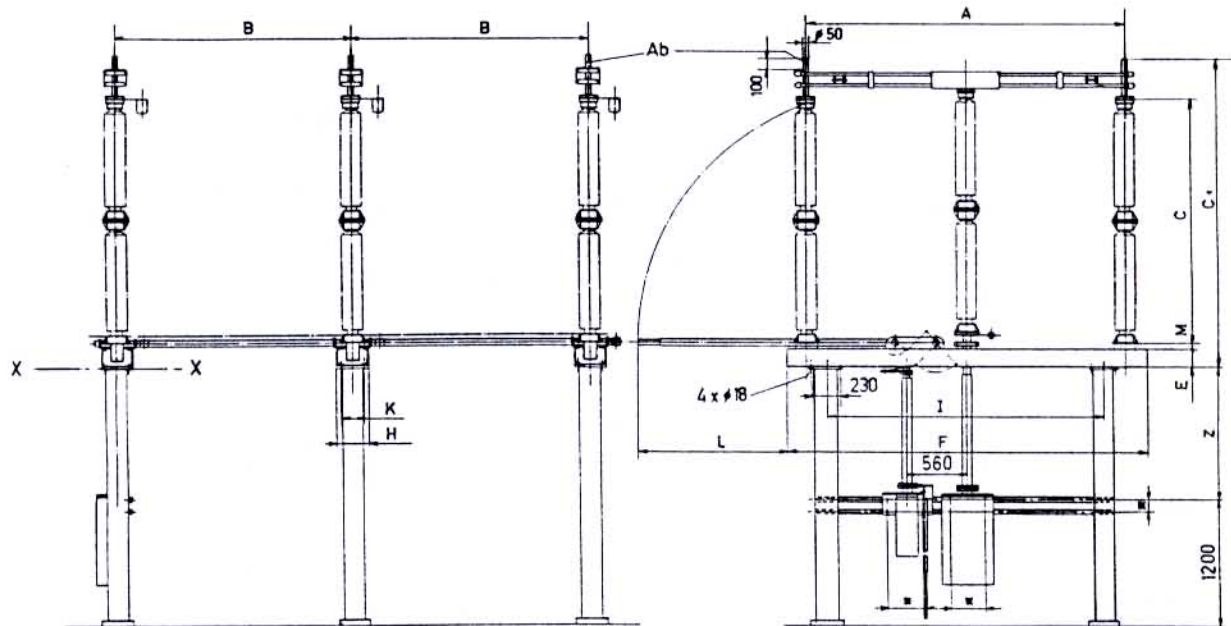


Double break disconnecter
Drehtrenner
Sectionneur tournant

TFX 3150
TFX 4000

170 kV, 245 kV



Masse gemäss Antriebsprospekt
 Cotes selon prospectus des commandes
 Measurements according to drive leaflet

Ab- Anschlussboizen
 Tige de connection
 Connection bolt

Änderungen vorbehalten
 Sous réserve de modifications
 Subject to change

Measurements	Abmessungen											Dimensions		
Rated voltage Nennspannung Tension assignée	A	B	C	C1	E	F	H	I	K	L	M	M _d ³⁾	W ³⁾	G ⁴⁾
		min.	IEC					min. max.		≈		Nm	N	kg
170 kV	2200	2000	1700	2265	120	2420	220	1600-1860	160	940	45	1330	1390	140
245 kV	3000	2900	2300	2905	160	3400	300	2000-2600	230	1400	45	2310	1930	240

³⁾ Max. strength of wind * in section X-X
 Max. Windwirkung * im Schnitt X-X
 Effet max. du vent * dans la coupe X-X

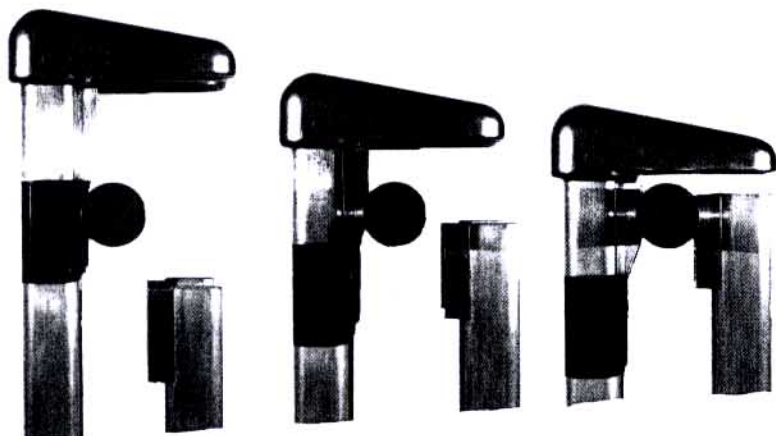
⁴⁾ Weight each pole without insulators and drive
 Gewicht pro Pol ohne Isolator und Antrieb
 Poids par pôle, sans isolateurs et commande

Technische Daten	Caractéristiques techniques			Technical data
Nennspannung Tension assignée Rated voltage				245 kV
Isolatorenhöhe nach IEC Hauteur d'isolateur selon CEI Insulator height according to IEC		(mm)		2300
Nenn-Stehblitzstossspannung Tension de tenue assignée aux chocs de foudre Rated lightning impulse withstand voltage	1,2/50 µs	(kV)	1) 2)	1050 1200
Nenn-Stehschaltstossspannung Tension de tenue assignée aux chocs de manœuvre Rated switching impulse withstand voltage	250/2500 µs	(kV)	1) 2)	- -
Nenn-Stehwechselspannung Tension de tenue assignée à fréquence industrielle Rated power-frequency withstand voltage	50 Hz/1 min.	(kV)	1) 2)	460 530

1) PH ⊥ PH PH 2) Trennstrecke, Distance d'isolement, Isolating distance

		TFX 3150			TFX 4000		
		$I_{peak}/I_{th} = 125/50 \text{ kA}; t = 1 \text{ s (3 s)}$			$I_{peak}/I_{th} = 125/50 \text{ kA}; t = 1 \text{ s (3 s)}$ $I_{peak}/I_{th} = 160/63 \text{ kA}, t = 1 \text{ s}$		
		$I_N = 2000 \text{ A}$ $\Delta T = 30 \text{ K}$	$I_N = 2500 \text{ A}$ $\Delta T = 50 \text{ K}$	$I_N = 3150 \text{ A}$ $\Delta T = 65 \text{ K}$	$I_N = 2500 \text{ A}$ $\Delta T = 30 \text{ K}$	$I_N = 3150 \text{ A}$ $\Delta T = 50 \text{ K}$	$I_N = 4000 \text{ A}$ $\Delta T = 65 \text{ K}$
170 kV							
245 kV							

$U = 245 \text{ kV}$ $I_{peak}/I_{th} = 125/50 \text{ kA}, 1 \text{ s}$ $I_N = 2500 \text{ A}$ $\Delta T = 50 \text{ K}$



Angaben für Offert-Anfragen und Bestellungen

- Nennspannung
- Kurzschlussstrom
- Nennstrom
- Erwärmung
- Phasenabstand B
- Mass Z
- Isolatorentyp

Indications pour demandes d'offres et commandes

- Tension assignée
- Courant de court-circuit
- Courant assigné
- Echauffement
- Distance entre-phase B
- Cote Z
- Type d'isolateur

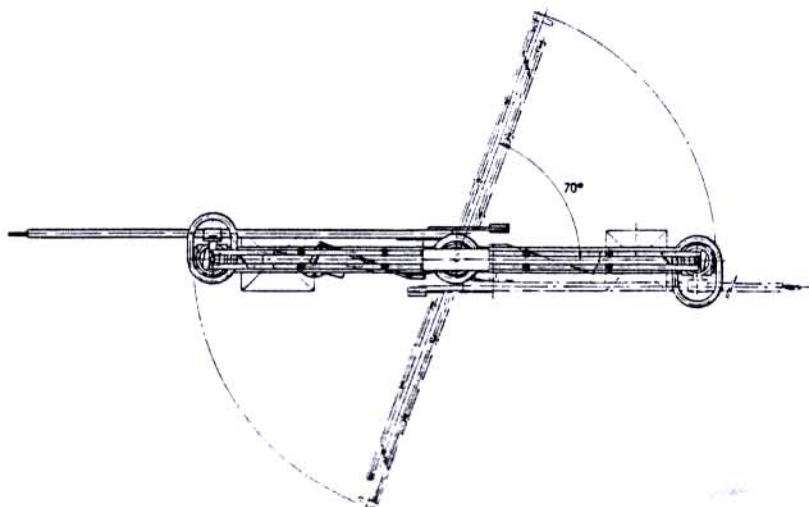
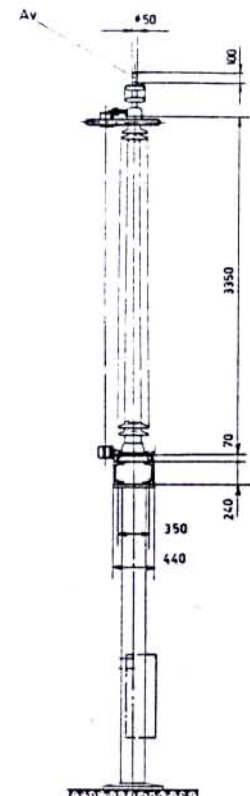
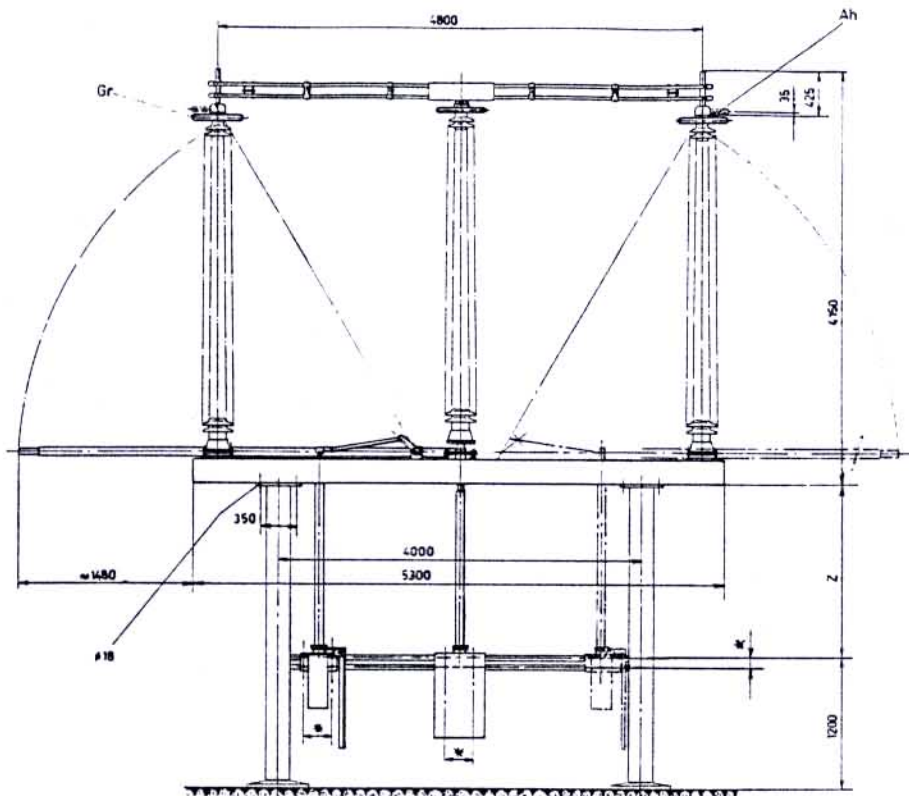
Indications for inquiries and orders

- Rated voltage
- Short circuit current
- Rated normal current
- Temperature rise
- Phase distance B
- Measure Z
- Insulator type

**Double break disconnecter
Drehtrenner
Sectionneur tournant**

**TFX 3150
TFX 4000**

420 kV



Av Vertical terminal
Anschlussbolzen vertikal
Tige de connexion verticale

Ah Horizontal terminal (Execution special)
Anschlussbolzen horizontal (Spez. ausführung)
Tige de connexion horizontale (Execution speciale)

• Measurements according to drive leaflet
Masse gemäss Antriebsprospekt
Cotes selon prospectus des commandes

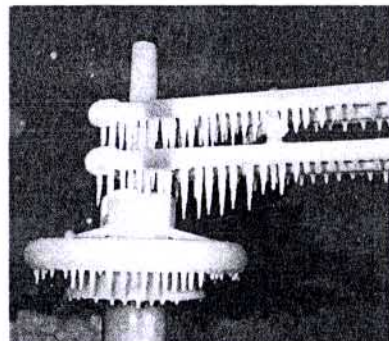
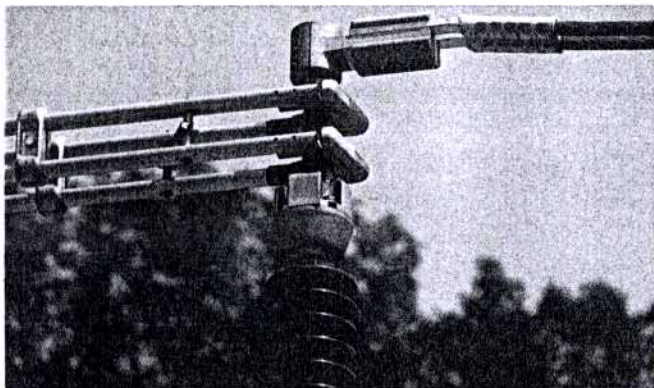
Weight each pole without insulators and drive = 480 Kg
Gewicht pro Pol ohne Isolatoren und Antriebe = 480 Kg
Poids par pôle, sans isolateurs et commande = 480 Kg

Subject to change
Änderungen vorbehalten
Sous réserve de modifications

Technische Daten	Caractéristiques techniques		Technical data
Nennspannung Tension assignée Rated voltage			420 kV
Isolatorenhöhe nach IEC Hauteur d'isolateur selon CEI Insulator height according to IEC	(mm)		3350
Nenn-Stehblitzstossspannung Tension de tenue assignée aux chocs de foudre Rated lightning impulse withstand voltage	1,2/50 µs	(kV)	¹⁾ 1425 ²⁾ 1665
Nenn-Stehschaltstossspannung Tension de tenue assignée aux chocs de manœuvre Rated switching impulse withstand voltage	250/2500 µs	(kV)	¹⁾ 1050 ²⁾ 1245
Nenn-Stehwechselspannung Tension de tenue assignée à fréquence industrielle Rated power-frequency withstand voltage	50 Hz/1 min.	(kV)	¹⁾ 520 ²⁾ 610

¹⁾ PH-L / PH-PH ²⁾ Trennstrecke, Distance d'isolement, Isolating distance

420 kV	TFX 3150			TFX 4000		
	$I_{peak}/I_{th} = 125/50 \text{ kA}; t = 1 \text{ s (3 s)}$			$I_{peak}/I_{th} = 125/50 \text{ kA}; t = 1 \text{ s (3 s)}$ $I_{peak}/I_{th} = 160/63 \text{ kA}, t = 1 \text{ s}$		
$I_N = 2000 \text{ A}$ $\Delta T = 30 \text{ K}$	$I_N = 2500 \text{ A}$ $\Delta T = 50 \text{ K}$	$I_N = 3150 \text{ A}$ $\Delta T = 65 \text{ K}$	$I_N = 2500 \text{ A}$ $\Delta T = 30 \text{ K}$	$I_N = 3150 \text{ A}$ $\Delta T = 50 \text{ K}$	$I_N = 4000 \text{ A}$ $\Delta T = 65 \text{ K}$	



Angaben für Offert-Anfragen und Bestellungen

- Nennspannung
- Kurzschlussstrom
- Nennstrom
- Erwärmung
- Phasenabstand B
- Mass Z
- Isolatorentyp

Indications pour demandes d'offres et commandes

- Tension assignée
- Courant de court-circuit
- Courant assigné
- Echauffement
- Distance entre-phase B
- Cote Z
- Type d'isolateur

Indications for inquiries and orders

- Rated voltage
- Short circuit current
- Rated normal current
- Temperature rise
- Phase distance B
- Measure Z
- Insulator type